



## MANFEILD CIRCUIT

WHAT WE CAN OFFER YOU

Manfeild's world-class, 3km Circuit Chris Amon has hosted spectacular racing since opening in 1973, from club events to international meetings.

Manfeild has the longest motor racing circuit with uninterrupted views in the Southern Hemisphere. With a mixture of straights, the esses, hairpin and double apex corner, all on a cambered track, it's sure to be a delight for drivers and riders.

Four-wheeled action has ranged from the New Zealand Grand Prix to endurance events, trucks and the Trans-Tasman V8 utility racing.

Manfeild is also renowned for motorcycle racing, exemplified by the Castrol six-hour endurance series and world superbike fixtures that achieved global interest.

The 1.5km Driver Training Circuit has a mixture of fast and slow speed corners on a non-cambered track that offers a valuable driver training experience for a range of vehicles.

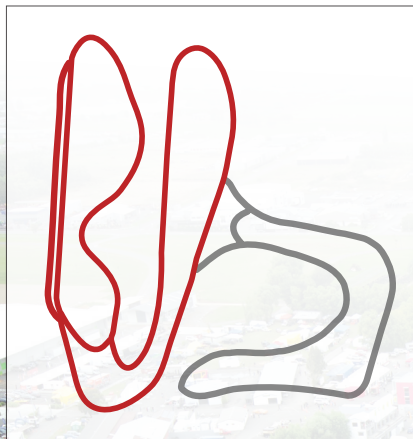
**Find out more about hiring the circuit in this booklet and contact us for a quote.**



# CIRCUITS AND FACILITIES

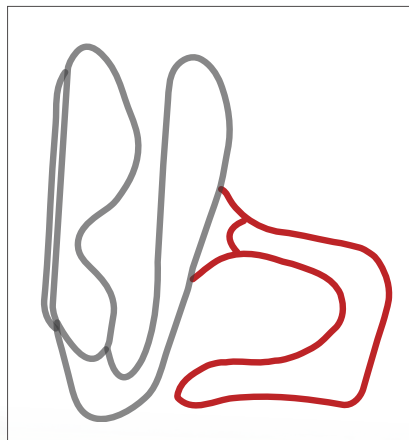
## 3km Circuit Chris Amon

- Licence: FIA Grade 3
- Length: 3.03kms
- Width: 12 metres
- Cambered corners and three straights with ample passing opportunities
- Control tower rooms:
  - Race day office, Ground Floor
  - Stewards room, Level 1
  - Commentary, Timing and Operations Room, Level 2
- Scrutineering Shed
- Open pit bay building with 30 spaces, each with single phase power
- Multiple toilet facilities



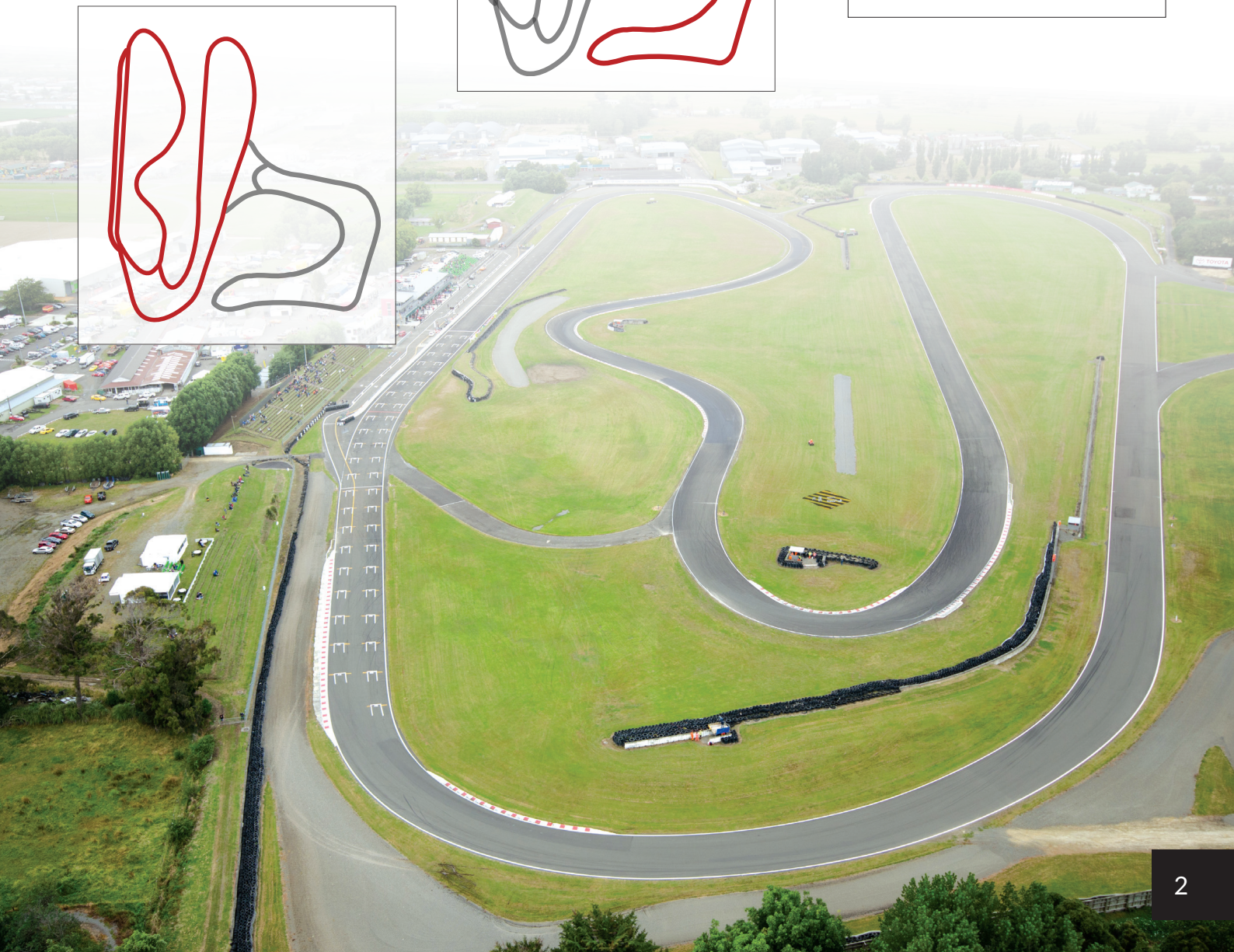
## 1.5km

- Length: 1.5kms
- Width: 12 metres
- Toilet facilities
- Currently no control tower infrastructure available and limited carparking
- Non-cambered track



## 4.5km

- Combining the best of both worlds – the 1.5km and 3km Circuit Chris Amon
- Facilities as mentioned under 3km Circuit Chris Amon and 1.5km circuits.





# SUPPORTING FACILITIES & EQUIPMENT

## CORPORATE PITLANE SUITES

PAX						
PITLANE SUITES	Function	Theatre	Classroom	Boardroom	Banquet	U - Shape
NDTC Suite	40	20	10	10	N/A	12
Manfeild Suite	80	40	16	20	50	20
Toyota Suite	160	100	20	20	80	24
Higgins Suite	80	40	16	20	50	20
Pitlane Suite Five	40	20	10	10	N/A	12

### PITLANE & SINGLE GARAGES

- 10 x lockable and alarmable pit lane garages (5m x 8m), complete with single & three phase power, hot and cold water and compressed air
- 12 x single lockable pit garages (3.7m x 5.9m), complete with workbench, single phase power and cold water
- 1 x double lockable pit garage (8m x 5.8m), complete with workbench, single phase power and cold water

### EQUIPMENT

- Alitrax Race Lights System
- Sealed asphalt pitlane pitting extension
- Sealed and grassed pit areas with single and three-phase power available
- Water outlets
- Waste oil dumps
- Spectator PA system
- Pit PA system
- Cordless microphone
- Fire extinguishers
- Flag sets
- Lime flour
- Brooms





# CIRCUIT HIREAGE

While the circuit is built for motor racing, it is also ideally suited to a number of activities including driver training, product launches, hot laps, cycling and skating. All motor vehicle activity on the circuit must be run by a suitably qualified person/s.

## PERMITTED MOTOR RACING EVENTS

To hire the circuit for any type of 'competition' the hirer should be a Motorsport New Zealand (MSNZ) or Motorcycling NZ (MNZ) affiliated club, and thus apply for and gain a permit through MSNZ/MNZ for the running of their event, complying to MSNZ/MNZ rules and regulations.

Once the permit is issued the hirer is required to provide a copy of this to Manfeild.

## NON-PERMITTED EVENTS

The circuit will only be hired to suitably qualified organisations or individuals that can provide evidence of having run track days, driver training or the activity that is being proposed.

The hirer must provide evidence of sufficient public liability insurance cover to a minimum value of \$2,000,000.00 NZD.

The hirer must provide a Health and Safety plan for the event, which is to be submitted to Manfeild for approval.

## REQUIREMENTS FOR ALL CIRCUIT EVENTS

- Manfeild venue hire terms and conditions are required to be signed by the Hirer.
- Advise Manfeild if your event is permitted or non-permitted, and apply with the requirements
- The circuit activity must comply with the Manfeild Park Trust's noise resource consent (see page 5)
- Confirmation of first aid provision as per Manfeild venue hire terms and conditions. Pro Med is Manfeild's exclusive provider and pricing options can be provided on request
- Confirmation of who will be providing marshalling and rescue for your event. The Manawatu Car Club is Manfeild's resident car club and can offer these services to your event.



# NOISE MANAGEMENT

Manfeild Park Trust operates under a noise resource consent and this governs all circuit activity.

## NOISE RESTRICTIONS MANFEILD MOTORSPORT



The Manfeild Circuit operates under a

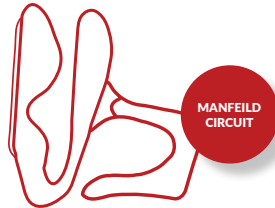
### NOISE RESOURCE CONSENT

that was granted by



Manfeild Park Trust's  
**Noise Resource Consent**  
governs the noise emission of the venue.

### ALL VEHICLES USING THE



shall comply with the standards relating to noise emission as imposed by:

### MSNZ & MNZ

whilst also ensuring to comply with  
Manfeild Park Trust's  
Noise Resource Consent.



is required to notify in a

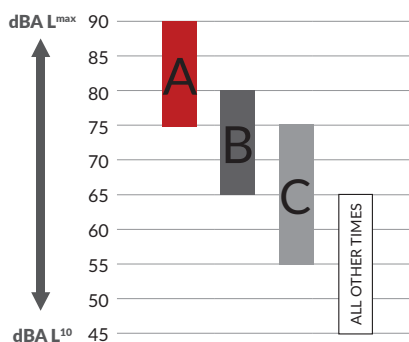


the Noise Management Plan for

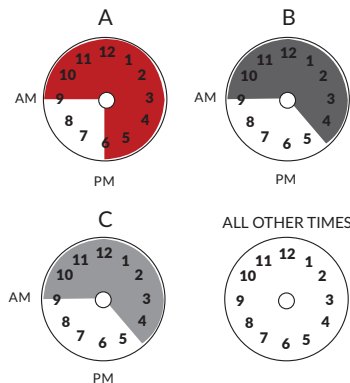
**12**  
MONTHS

as well as the Manawatu  
District Council.

### PERFORMANCE STANDARD (sound levels at the monitoring points\* cannot exceed):



### TIMES THAT THE PERFORMANCE STANDARD APPLIES:



### NOISE CATEGORY DAYS AVAILABLE PER TWELVE-MONTHS

A	B
Allocation: 20 category A days, of which no more than 6 days shall be a Sunday or a public holiday.	Allocation: 80 category B days, of which no more than 20 days shall be a Sunday or a public holiday.
C	ALL OTHER TIMES
No restrictions on the number category C days.	No restrictions on the number of days.

### HIRER'S RESPONSIBILITY



Know what Noise Category your event falls under and advise competitors what this means i.e. A B or C?

All vehicles used at the venue must be fitted with an

The hirer must not allow competitors to start and run their engines earlier than



which must remain on the  
**VEHICLE AT ALL TIMES.**  
Vehicles not complying with  
noise emissions requirements  
**ARE TO BE REMOVED**  
from the circuit until such  
time as they comply.

unless by prior arrangement with  
Manfeild Park Trust and in  
conjunction with the conditions of the  
**NOISE RESOURCE CONSENT**

**8AM**

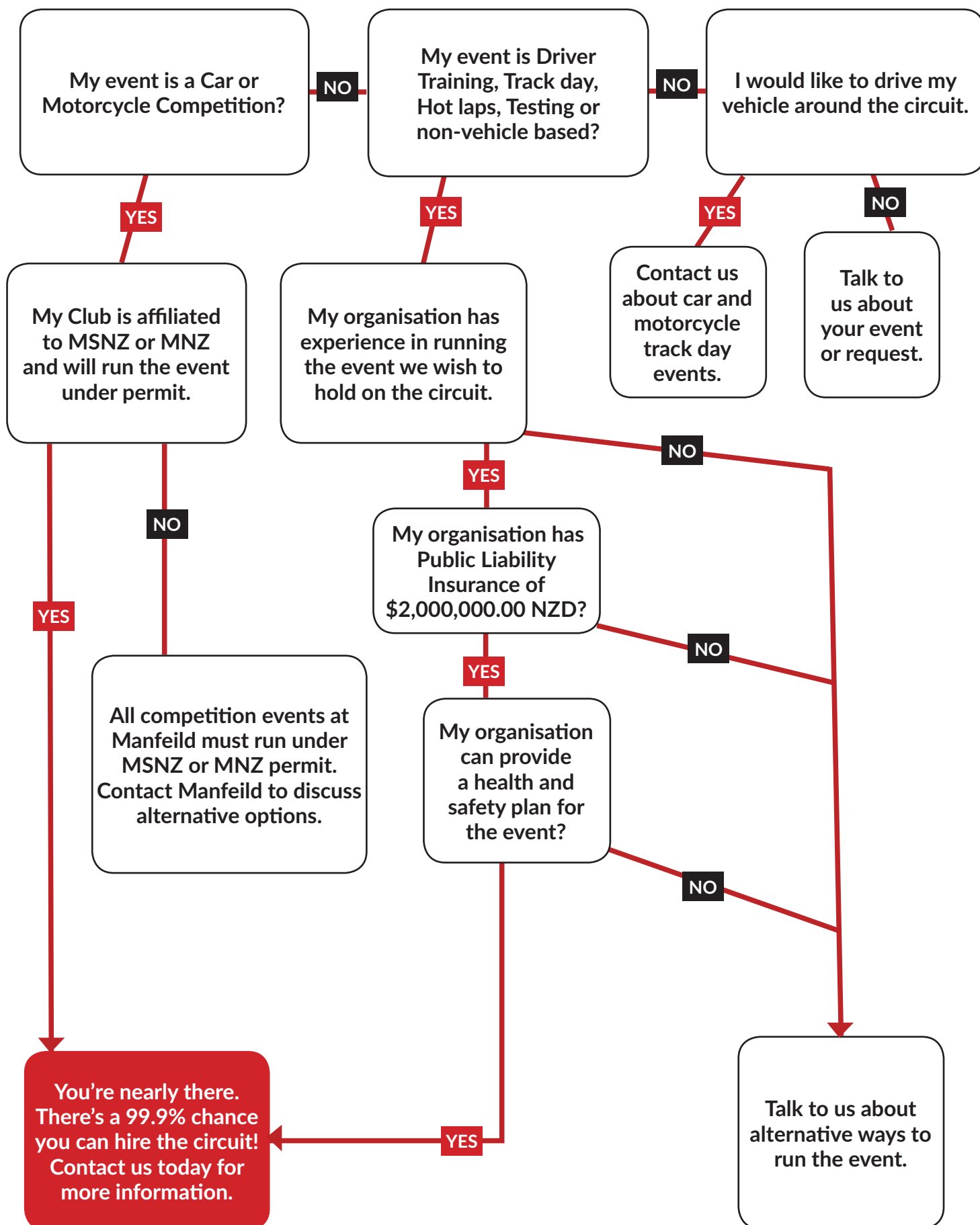
### \*MONITORING OF VENUE NOISE

Monitoring points are positioned on neighbouring properties at the circuit boundaries. Manfeild Park Trust undertakes independent noise monitoring tests, as guided by the NOISE RESOURCE CONSENT. The hirer acknowledges that any event may be monitored and reported on. Testing is carried out by an approved noise acoustic engineer.

### COMPLAINTS

Any excessive noise reported or any complaint in relation to noise made Manfeild Park Trust or the local Council will be investigated and this may affect future hire arrangements, to the extent that the hirer may be prevented from subsequent bookings of the venue.

# CAN I HIRE THE CIRCUIT?





## CATERING

---

Our caterers are passionate about providing exceptional food, beverages and service required for your event.

This means they work with you to ensure your event meets your expectations and budget.

All indoor catering and bar facilities are provided by KR'S Catering. A menu is available upon request for you to select your options or the catering team will create something especially for you.

Gala Caterer's look after our outdoor public catering and a menu offering is available upon request.

**Manfeild is not a BYO licenced premises.**

## PRICING

---

Contact us to talk about your event and a quote can be given once requirements are discussed.



## CONTACT:

Manfeild | 59 South Street, Feilding | T: (06) 323 7444 | E: [experience@manfeild.co.nz](mailto:experience@manfeild.co.nz)